



Safety Certified via:
CE, MSDS, UN38.3

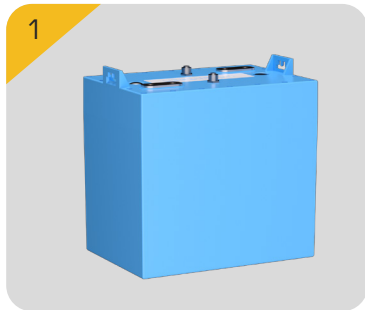
contact details

+86-755-2838 0586
office@wirentech.com
www.wirentech.com
Operation center (China) : 201, Bld 1, Luwu Branch
No. 6407 Pingshan Avenue, Jinsha Community,
Kengzi Street, Pingshan District, Shenzhen City

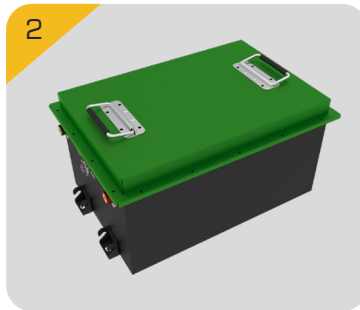
Spec Sheet

Electrical Characteristic	WG5130	WG5165	WG51105	WG51150	WG51200	WG76105
Capacity	30Ah	65Ah	105Ah	150Ah	200Ah	105Ah
Energy Storage	1536Wh	3328Wh	5376Wh	7680Wh	10240Wh	8064Wh
Nominal Voltage	51.2 Volts					
Full Charge Voltage	58.4 Volts					
Run time @ 0.5C load	2 Hours @ 77°F (25°C)					
Expected Cycle Life	More than 6000 cycles, with 0.2C charge and discharge rate, at 25°C, 80%DOD					
Operation Conditions						
Continuous Charge Current	Max. 30A	Max. 30A	Max. 50A	Max. 80A	Max. 100A	Max. 50A
Continuous Discharge Current	Max. 60A	Max. 65A	Max. 100A	Max. 150A	Max. 200A	Max. 100A
Peak Instant Discharge Current (5 Seconds)	150A	150A	150A	200A	250A	150A
Max. Charge Voltage	58.4V					
Discharge Cut-off Voltage	40.0V					
Charge Temperature	0°C ~ 45°C					
Discharge Temperature	-20°C ~ 65°C					
Charge Temperature	0°C ~ 45°C					
Storage Temperature	-10°C ~ 45°C					
Self-Discharge (Stored at 50% SOC)	<= 3%/month					
Function of BMS						
Item	Content			Criterion		
Cell Over Charge Protection	Over charge detection voltage			3.75±0.05V		
	Over charge detection delay time			0.96~1.4s		
	Over charge release voltage			3.60±0.05V		
	Maximum charge voltage			3.65±0.05V		
	Maximum charge current			≤150A		
Over Discharge Protection	Over discharge detection voltage			2.5V±0.10V		
	Over discharge detection delay time			2s		
	Over discharge release voltage			2.7V±0.10V		
Over Current Protection	Maximum continuous current			≤200A		
	Over current detection current			300A		
	Over current detection delay time			32S		
	Over current release condition			Cut load		
Short Circuit Protection	Short Circuit release condition			Cut load		
	Over current detection delay time			250 us		

Function of BMS		Content					Criterion
Balance	Balance current					2A	
	Start Voltage					3V	
Impedance	<10 mΩ						
Battery Protection		WG4830	WG5165	WG51105	WG51150	WG51200	WG76105
Dimension	260*180*265mm	465*254*215mm	493*335*258mm	748*322*230mm	578*513*258mm	692*344*253mm	
Weight	34Pounds (15.5Kg)	73.4Pounds (33.3Kg)	110Pounds (50Kg)	154Pounds (70Kg)	203Pounds (92Kg)	165.3Pounds (75Kg)	



WG5130



WG5165



WG51105



WG51150



WG51200



WG76105

Color Options



Bluetooth APP



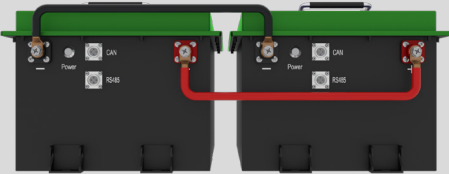
Android



Apple

Parallel Connections Demo:

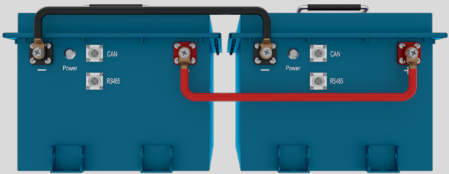
WG5165



Parallel Connection:

$$2 \times 51.2V \ 67Ah = 51.2V \ 134Ah$$

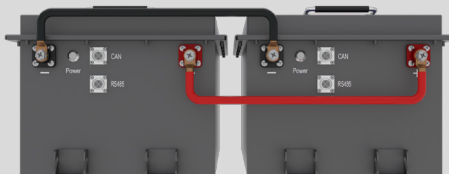
WG51105



Parallel Connection:

$$2 \times 51.2V \ 105Ah = 51.2V \ 210Ah$$

WG51150



Parallel Connection:

$$2 \times 51.2V \ 150Ah = 51.2V \ 300Ah$$

WG51200



Parallel Connection:

$$2 \times 51.2V \ 200Ah = 51.2V \ 400Ah$$