

INTEGRATED ENERGY STORAGE SYSTEM

- Wirentech integrated system is an on/off grid battery energy storage system, which could connect with solar panel, grid, generator and load.
- Stackable LFP battery module, hybrid storage inverter, battery management system (BMS) and fire arrestor are integrated.
- Multiple working modes are available to meet various applications, ideally applied to energy independence, reduce electricity bill, as well as UPS .



CCS NEW

CCS integrates 1-2 FPCs(insulating film, conductor, adhesive), copper and aluminum bars and other structural parts. It has outstanding advantages in terms of safety, light weight, and regular layout due to its insulation and high integration, ultra thinness and ultra softness.

LCD NEW

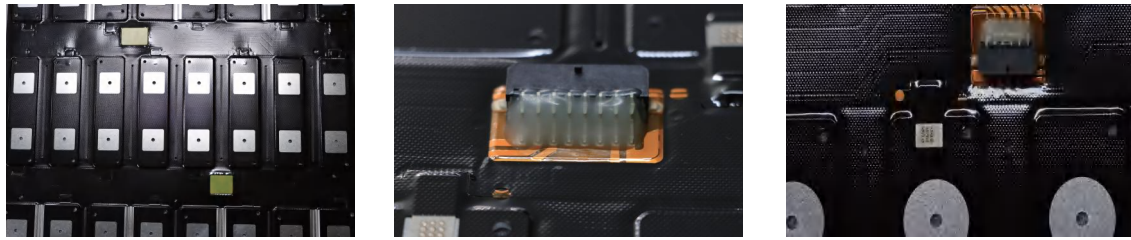
Touchable LCD allows you to view and select inverter brands. The default inverter is megarevo and optional inverters include victron, growatts, SMA, schneider and sol-ark(deye).

Fire-arrestor NEW

Fire-arrestor is a fire extinguisher that is specially designed for putting out lithium battery fire or flames. It is a double home protection to prevent from any fire accidents.



CCS integrates 1-2 FPCs(insulating film, conductor, adhesive), copper and aluminum bars and other structural parts. It has outstanding advantages in terms of safety, light weight, and regular layout due to its insulation and high integration, ultra-thin thickness and ultra-softness.



Heavy duty busbar, which expands the contact area between copper bar and module, adopts the technique of high-temperature chemical nickel plating. It performs well in electrical and thermal conductivity, corrosion resistance and low internal resistance and ensures stable performance, large space and simple repair.




Technical specification	WIS5K	WIS6K	WIS8K
Input (PV)			
Max.power(Kw)	7.5	9	12
Max. DC voltage (V)	500		
MPPT voltage range(V)	120-500		
Max.Input current of single MPPT(A)	12		
MPPT tracker/strings	4/1		
AC output			
Rated output power(KVA)	5	6	8
Max.output current(A)	24	28.8	38.3
Ac output voltage(V)	120/240(split phase),230(single Phase)		
Frequency(Hz)	50/60		
PF	0.8lagging-0.8leading		
THDi	< 3%		
AC output topology	Split phase,sigle phase		
Battery			
Battery voltage range(V)	40-58		
Max.charging voltage(V)	58		
Max.charge/discharge current(A)	120/120	135/135	190/190
Battery type	lithium/Lead-acid		
Communication interface	CAN/RS485		

Technical specification	WIS5K	WIS6K	WIS8K
-------------------------	-------	-------	-------

EPS output			
Rated power(KVA)	5	6	8
Rated output voltage(V)	120/240(split phase),230(single Phase)		
Rated output current(A)	24	28.8	38.3
Rated frequency(Hz)	50/60		
Automatic switching time(ms)	<20		
THDu	<2%		
Overload capacity	125%,60S / 150%,1S		

General data			
Max. efficiency	≥98.2%		
North american efficiency	≥97.2%		
Ingress protection	IP65/NEMA 3R		
Noise emission(dB)	<25	<29	<29
Operation temperature	-20°C-60 °C		
Cooling	Natural		
Relative humidity	0-95%(non-condensing)		
Altitude	2,000(>2,000 Derating)		
Dimensions W*D*H (mm)	430*220*710		
weight(Kg)	41		
Isolation transformer	No		
Self-consumption(w)	<3		

Display and communication	
Display	LCD,touch screen
Interface:RS485/Wifi/4G/	Yes
Safety standard	UL1741SA all options,UL1699B,CSA 22.2
EMC	FCC Part 15,Class B
On-grid	IEEE 1547, IEEE 2030.5,Hawei Rule 14H,Rule 21 Phase I,II,III,NRS

Battery modules							
System Structure							
Rated output power	8000W						
Number of battery	2	3	4	5	6	7	8
Battery capacity	10.24KWh	15.36KWh	20.48KWh	25.6KWh	30.72KWh	35.84KWh	40.96KWh
Operating temperature	-20-60°C						
Storage temperature	0-45°C						
Humidity	5%-95%						
Cooling strategy	Natural Cooling						
Enclosure protection rate	IP20						
Communication	CAN/RS485						
Weight	92kg	138kg	184kg	230kg	276kg	322kg	368kg
Dimension[W x H x D]	591*440*370mm	591*440*555mm	591*440*740mm	591*440*925mm	591*440*1110mm	591*440*1295mm	591*440*1480mm