

INTEGRATED ENERGY STORAGE SYSTEM

- Wirentech Integrated system is an on/off grid battery energy storage system, which could connect with solar panel, grid, generator and load.
- Stackable LFP battery module, hybrid storage inverter, battery management system (BMS) and fire arrestor are integrated.
- Multiple working modes are available to meet various applications, ideally applied to energy independence, reduce electricity bill, as well as UPS .



CCS NEW

CCS integrates 1-2 FPCs(insulating film, conductor, adhesive), copper and aluminum bars and other structural parts. It has outstanding advantages in terms of safety, light weight, and regular layout due to its insulation and high integration, ultra thinness and ultra softness.

LCD NEW

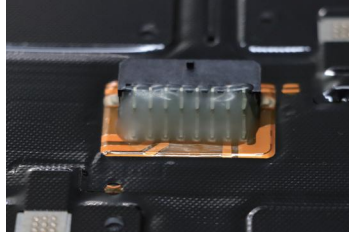
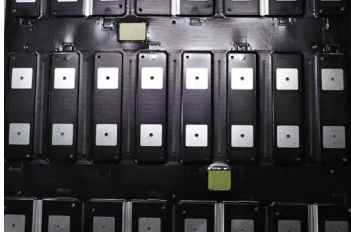
Touchable LCD allows you to view and select inverter brands. The default inverter is megarevo and optional inverters include victron, growatts, SMA, schneider and sol-ark(deye).

Fire-Arrestor NEW

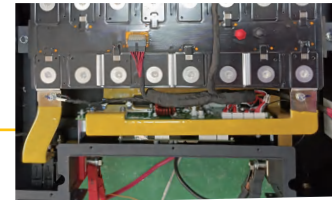
Fire-arrestor is a fire extinguisher that is specially designed for putting out lithium battery fire or flames. It is a double home protection to prevent from any fire accidents.



CCS integrates 1-2 FPCs(insulating film, conductor, adhesive), copper and aluminum bars and other structural parts. It has outstanding advantages in terms of safety, light weight, and regular layout due to its insulation and high integration, ultra-thin thickness and ultra-softness.



Heavy duty busbar, which expands the contact area between copper bar and module, adopts the technique of high-temperature chemical nickel plating. It performs well in electrical and thermal conductivity, corrosion resistance and low internal resistance and ensures stable performance, large space and simple repair.



Technical specification	WIS5K		WIS6K		WIS8K	
-------------------------	-------	--	-------	--	-------	--

Battery							
Battery voltage range(V)	40-58						
Max.charging voltage(V)	58						
Max.charge/discharge current(A)	120/120		135/135		190/190		
Battery type	lithium/Lead-acid						
Communication interface	CAN/RS485						

Battery modules							
-----------------	--	--	--	--	--	--	--

System Structure	2		3		4		5		6		7		8	
Rated output power	8000W													
Number of battery	2		3		4		5		6		7		8	
Battery capacity	10.24KWh		15.36KWh		20.48KWh		25.6KWh		30.72KWh		35.84KWh		40.96KWh	
Operating temperature	-20-60°C													
Storage temperature	0-45°C													
Humidity	5%-95%													
Cooling strategy	Natural Cooling													
Enclosure protection rate	IP20													
Communication	CAN/RS485													
Weight	92kg		138kg		184kg		230kg		276kg		322kg		368kg	
Dimension[W x H x D]	591*440*370mm		591*440*555mm		591*440*740mm		591*440*925mm		591*440*1110mm		591*440*1295mm		591*440*1480mm	